

# A1 INSTALLATION DRAWING

IF THIS DOCUMENT IS PRINTED IN HARDCOPY, IT IS FOR INFORMATION USE ONLY AND THEREFORE IS NOT SUBJECT TO UPDATING CONTROLS. ALWAYS REFER TO SOLIDWORKS VIEWER FOR LATEST ISSUE

FIRST ANGLE PROJECTION

THIS DRAWING IS CONFIDENTIAL AND IS SUPPLIED ON THE EXPRESS CONDITION THAT IT SHALL NOT BE LOANED OR COPIED OR DISCLOSED TO ANY OTHER PERSON OR USED FOR ANY OTHER PURPOSE WITHOUT THE WRITTEN CONSENT OF AP RACING LTD.

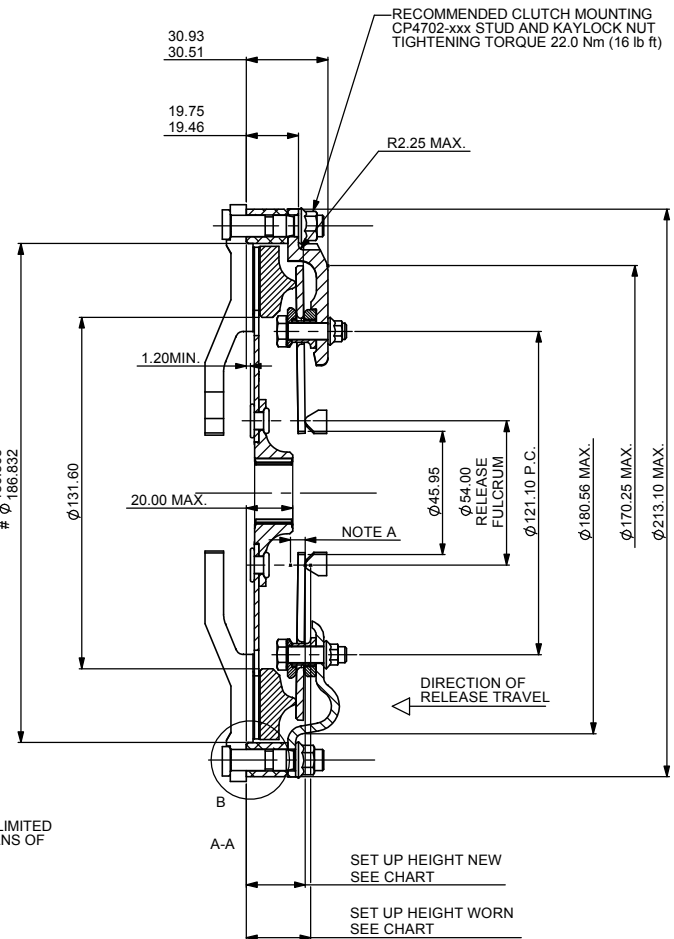
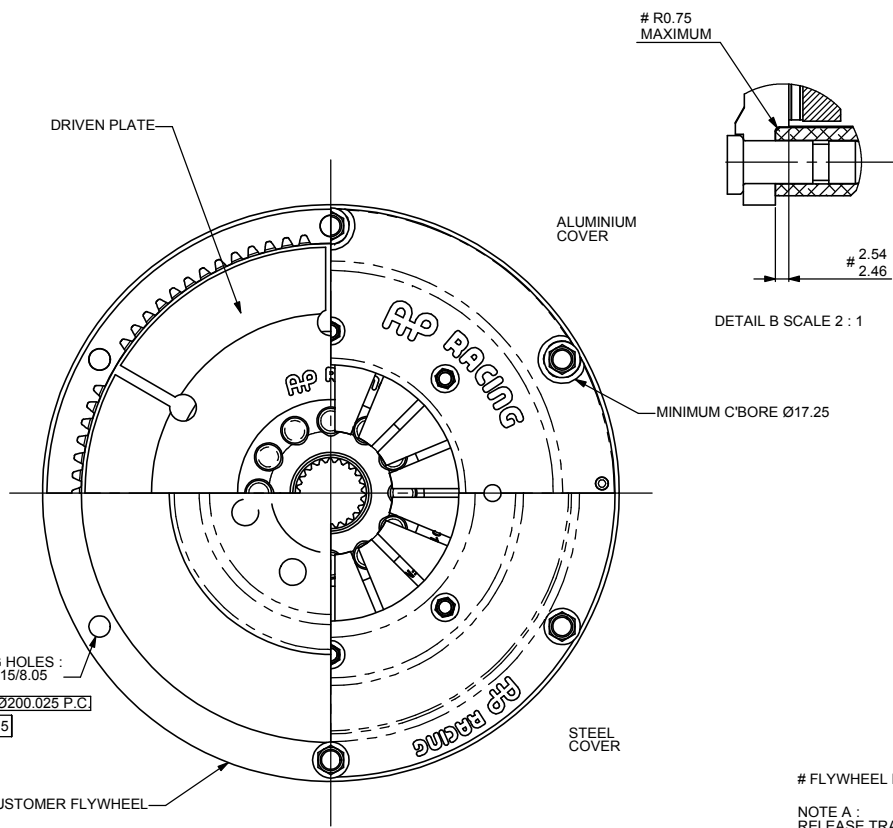


AP Racing  
Wheler Road  
Coventry  
CV3 4LB

Tel: +44 (0) 24 7663 9595  
Fax: +44 (0) 24 7663 9559  
e-mail: engineering@apracings.co.uk  
Web site: http://www.apracings.com

© AP Racing Ltd. 2005

Issue No.	Alterations			Zone	Initials
	Date & No.	Particulars	#		
4	01/02/10 C3789	REDRAWN IN SOLIDWORKS. CRV ASSEMBLY: RELEASE LOAD - MAX PEAK WORN 4400N WAS 347daN TORQUE CAPACITY: 424Nm WAS 425Nm ORA ASSEMBLY: RELEASE LOAD - MAX PEAK WORN 3300N WAS 222daN TORQUE CAPACITY: 266Nm WAS 290Nm GRN ASSEMBLY: RELEASE LOAD - MAX PEAK WORN 2200N WAS 154daN TORQUE CAPACITY: 164Nm WAS 195Nm ALL REFS: MAX PEAK NEW RELEASE LOAD ADDED.			



# FLYWHEEL DIMENSIONS

NOTE A :  
RELEASE TRAVEL TO BE LIMITED TO 5.50 MAXIMUM BY MEANS OF AN EXTERNAL STOP.

**RECOMMENDED RELEASE BEARING :-**

STEEL CAGED, ROUND NOSED BALL TYPE BEARING TO BE FREE OF SPRING FINGERS WHEN CLUTCH IS FULLY ENGAGED.  
CP3457-2 STANDARD RELEASE BEARING (OUTER RACE ROTATES)  
CP3457-6 HIGH SPEED RELEASE BEARING (INNER RACE ROTATES).

**SUGGESTED FLYWHEEL MATERIAL :-**

0.35/0.45% CARBON STEEL. BRINELL 200 MIN. OR SUITABLE MATERIAL FOR HIGH RPM.  
FRICTION FACE TO BE FINE TURNED AND GROUND SMOOTH AND FLAT. RUNOUT AT R77.2 <= 0.08 MAX. WHEN ASSEMBLED TO CRANKSHAFT.

**TORQUE CAPACITY :-**

FOR APPLICATIONS EXCEEDING THE MAXIMUM RECOMMENDED FIGURES PLEASE CONTACT A.P. RACING.

**CLUTCH WEAR IN'**

THIS CLUTCH HAS BEEN DESIGNED TO ACHIEVE 0.75mm 'WEAR IN' MINIMUM.  
DRIVEN PLATE THICKNESS NEW: 7.08 NOMINAL  
DRIVEN PLATE THICKNESS WORN: 6.68 MINIMUM

ALTERNATIVE CLUTCH MOUNTING:  
CAP HEAD BOLT (C'BORED TREAD)  
TIGHTENING TORQUE 22.0 Nm (16 lb ft)

DRIVEN PLATES	
SPLINE SIZE	DRIVEN PLATE CP2012 TYPE
1.00" x 23	CP2012-165FM3
7/8" x 20	CP2012-166FM3
29 x 10	CP2012-199FM3
1"5/8 x 26	CP2012-171FM3

FOR OTHER SPLINE SIZES PLEASE CONTACT AP RACING

CLUTCH ASSEMBLY PART No.	COVER TYPE	SET UP HEIGHT		RECOMMENDED MAX. DYNAMIC TORQUE CAPACITY Nm (lb/ft)	RELEASE LOAD (N) MAX PEAK NEW	RELEASE LOAD (N) MAX PEAK WORN
		NEW	MAX WORN			
CP2116ACRV	ALUMINIUM	23.82	26.30	424 (313)	3500	4400
CP2116CRV	STEEL	21.60	26.57			
CP2116AORA	ALUMINIUM	24.09	27.65	266 (196)	2400	3300
CP2116ORA	STEEL	21.87				
CP2116AGRN	ALUMINIUM	25.16	27.65	164 (121)	1600	2200
CP2116GRN	STEEL	22.98				

ASSMBLY INERTIA			
CLUTCH TYPE	COMPLETE ASSY. WEIGHT INC. D/P'S.	COMPLETE ASSY. INERTIA INC. D/P'S.	D/P AND HUB INERTIA
STEEL COVER	3.07 kg	0.018 kgm <sup>2</sup>	0.0018 kgm <sup>2</sup>
ALUMINIUM COVER	2.77 kg	0.016 kgm <sup>2</sup>	

SCALE 1:1	SHEET 1 OF 1
DRAWN	Jeremy Govan
APPROVED	
DERIVED FROM	CP2116-1CD (MEDUSA)
TITLE	Ø 7,25" (Ø184.00mm) SINGLE PLATE CLUTCH ASSEMBLY
DRG NO.	CP2116-1CD